



AC750
Max. speed up to 300Mbps (2.4GHz) & 433Mbps (5GHz)



Dual-Band
Less interference, better performance



VPN
Remote network access with security & privacy



Easy Setup
Use a smart phone/tablet, no CD required



iQoS
Intelligent bandwidth management

BR-6208AC V2

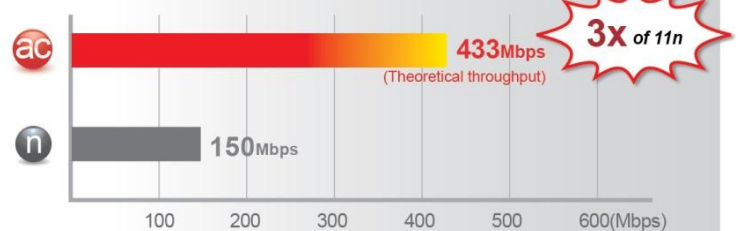
AC750 Dual-Band Wi-Fi Router with VPN Access Point, Range Extender, Wi-Fi Bridge & WISP

The extraordinary growth in the number of wireless devices found in modern homes has seen a huge increase in demand for wireless speed, range and bandwidth. This continuing trend away from wired connections to wireless communication and the ever-increasing throughput demands of new Wi-Fi devices and applications—including Internet TVs, computers, tablets and smartphones—drives the requirements in today's homes for high-performance, reliable Wi-Fi to unprecedented levels. To meet the connectivity needs of homes and businesses alike, Edimax has launched the BR-6208AC V2 dual-band 802.11ac router with elegant and compact design: featuring the latest 11ac standard for extraordinary improvements in the speed, reliability and quality of wireless communications.

Next-Generation Wireless Networking

The Edimax BR-6208AC V2 router supports the next generation IEEE 802.11ac wireless standard, meaning higher data rates in the 5GHz band. With 300Mbps speeds in the 2.4GHz band and 433Mbps speeds in 5GHz, the BR-6208AC V2 is ideal for HD video streaming and large file transfers. The router is also backward compatible with 802.11a/b/g/n to ensure compatibility with legacy Wi-Fi devices.

Maximum Speed: Next Generation 802.11ac vs. 802.11n



Concurrent Dual-Band Wi-Fi Connectivity

The Edimax BR-6208AC V2 router provides simultaneous 2.4GHz (802.11n) and 5GHz (802.11ac) wireless network connectivity for maximum flexibility of use.

5GHz (Up to 433Mbps)
Interference-Free
HD Video and Gaming

Online Gaming

HD Video Streaming

VoIP Calling

ac
n
a

Concurrent Dual-Band

2.4GHz (Up to 300Mbps)
More Supported Devices
Basic Internet Applications

Web Browsing

Online Chat

Email and downloading

n
g
b

AC750: 433Mbps(5GHz) + 300Mbps(2.4GHz)

AC1200 Dual-Band Wi-Fi Router with VPN Access Point, Range Extender, Wi-Fi Bridge & WISP

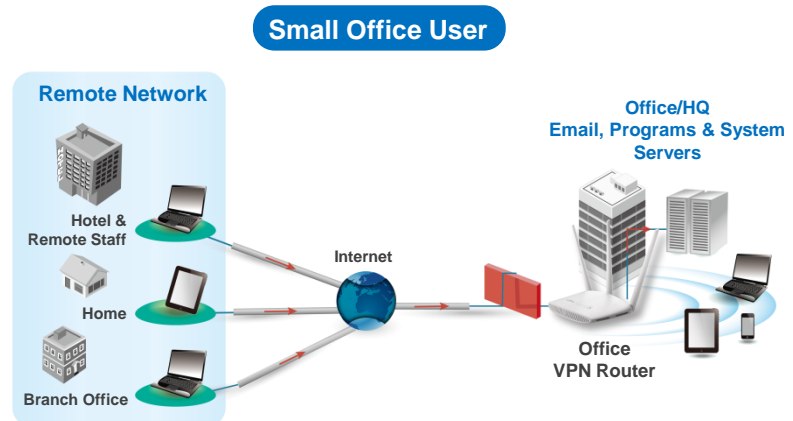
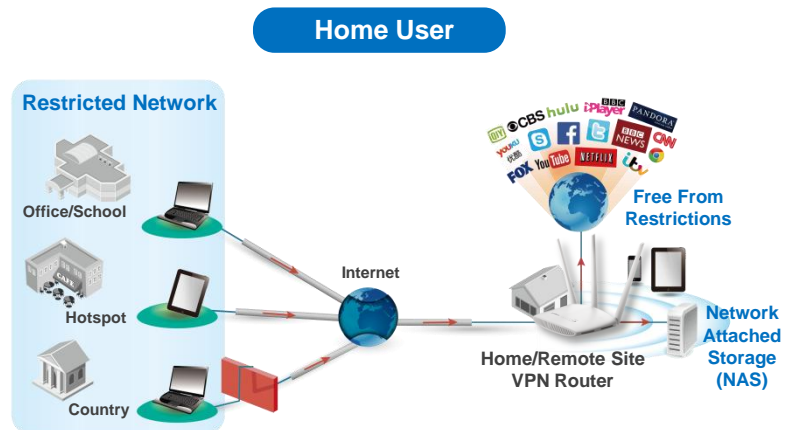
BR-6208AC V2

VPN Access for Privacy & Security

Built-in Virtual Private Network (VPN) support for easy VPN access on all your devices. VPNs enable you to access secure, remote networks from anywhere and can offer privacy and security online. Log in to your work/school network remotely or avoid geoblocking, protect privacy on public Wi-Fi and bypass Internet censorship.

Home Users: Avoid regional restrictions and access geoblocked content such as Netflix or iPlayer from anywhere. Ensure your privacy and anonymity online and defeat censorship and other location-based content restrictions. You can also remotely access your home network when you're away, and use your encrypted VPN for security when out and about using potentially unsafe public Wi-Fi hotspots.

Small Office Users: Enable your employees to access company resources remotely such as email, documents saved on the company server and any programs/systems when they are outside the office.



5-in-1 Router, Access Point, Range Extender, Wireless Bridge and WISP

The BR-6208AC V2 can work as router, access point, range extender, wireless bridge or WISP. Just configure the mode you need for your network environment using the smart iQ Setup wizard.



Switch mode using the smart iQ setup wizard on any device with a web browser, no CD required.

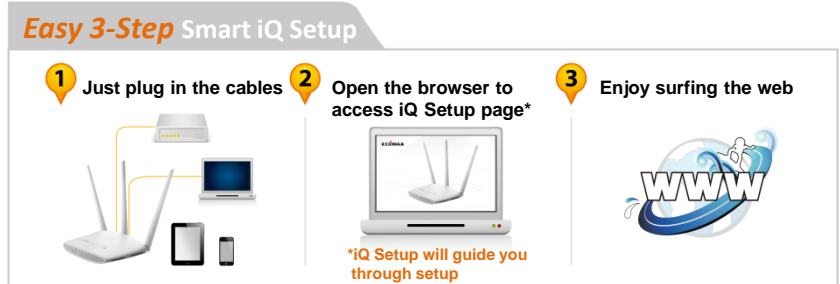
*Mobile device setup requires iOS 4.0 or Android 4.0 and above.

AC750 Dual-Band Wi-Fi Router with VPN Access Point, Range Extender, Wi-Fi Bridge & WISP

BR-6208AC V2

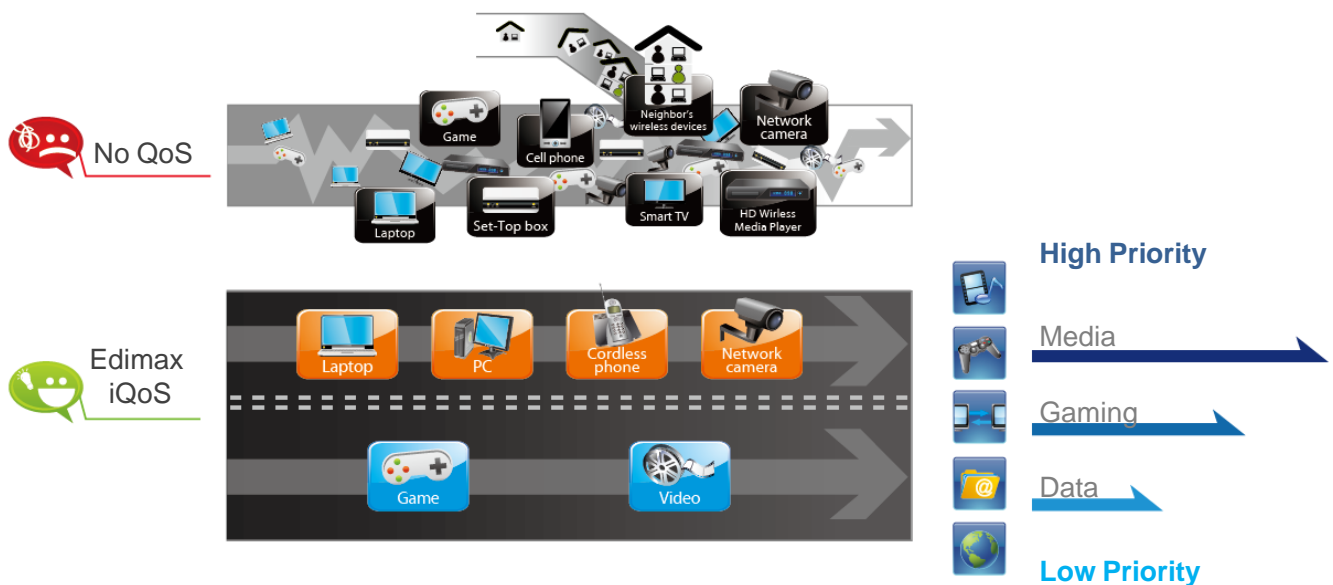
Smart iQ Setup

Features iQ Setup for smart, automatic and quick installation with no CD required.



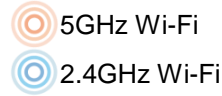
Edimax's Revolutionary iQoS

iQoS is Edimax's solution for a quicker, easier, and more effective way to manage Internet bandwidth. While Quality of Service (QoS) functionality is a common feature in routers across the market, typically only advanced users have the knowledge required to set up the complex parameters. Edimax though has redesigned QoS with user-friendliness and accessibility in mind. A simple and intuitive user interface allows users to arrange bandwidth priority settings in just a few clicks. With iQoS, you can enjoy gaming, video streaming, VoIP applications and BT clients at the same time without the usual nightmare of lag and interruptions. An original, efficient and effective means of managing your Internet bandwidth.



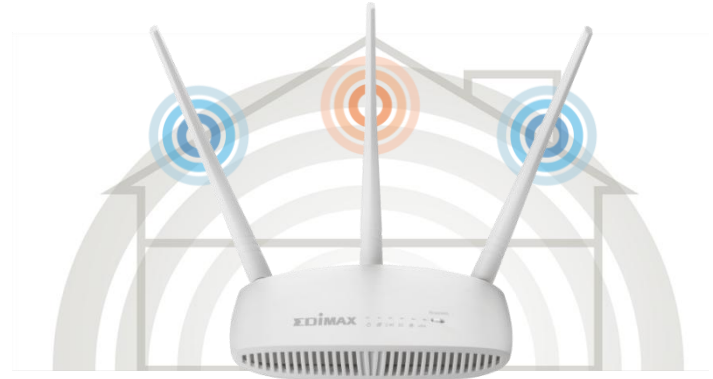
AC750 Dual-Band Wi-Fi Router with VPN Access Point, Range Extender, Wi-Fi Bridge & WISP

BR-6208AC V2



High Gain Antennas For Better Wi-Fi Performance

Employing three external high-gain fixed antennas, the BR-6208AC V2 provides powerful 2.4GHz and 5GHz dual-band signal strength and enhances Wi-Fi range, providing signal penetration through walls and floors across your home or office.



Multi-SSID & VLAN Support*

Multi-SSID enables users to configure up to eight separate SSIDs (2.4GHz x 4 and 5GHz x 4) in order to group and manage users according to your requirements. In addition, each SSID can be assigned a different VLAN ID, so users with multiple VLANs can manage the network access level of each SSID – ensuring security and protecting confidential or critical network resources.

*Access point mode only



Guest Network*

Supports a guest network to provide connectivity while isolating guests from your primary network.

*Router mode only



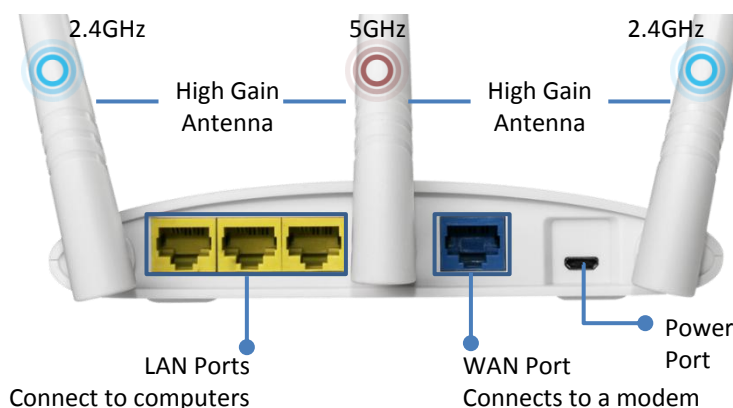
AC750 Dual-Band Wi-Fi Router with VPN Access Point, Range Extender, Wi-Fi Bridge & WISP

BR-6208AC V2

TECHNICAL SPECIFICATIONS

FUNCTIONS	HARDWARE INTERFACE	MANAGEMENT & INSTALLATION
<ul style="list-style-type: none"> Supports router, access point, range extender, wireless bridge and WISP modes Guest network Up to 8 SSIDs (2.4GHz x 4 and 5GHz x 4) with VLAN support in AP mode IGMP proxy and IGMP snooping DDNS and DHCP Port triggering for special applications Virtual server and DMZ hosting MAC/IP filter and URL blocking iQoS for smart bandwidth management Static routing UPnP architecture VPN pass-through (IPSec/PPTP) Wi-Fi schedule control Fault tolerance firmware upgrade 	<ul style="list-style-type: none"> 1 x RJ-45 10/100Mbps WAN port 3 x RJ-45 10/100Mbps LAN port LED indicators: power, Internet, 2.4GHz wireless, 5GHz wireless, new FW, VPN 2 x 2.4GHz antennas and 1 x 5GHz antenna WPS/Reset button 	<ul style="list-style-type: none"> Multi-language user interface Supports remote management System status and security log Firmware upgradable Smart iQ Setup, no CD required Supports smartphone, tablet or laptop setup (iOS 4 or Android 4 and above are required for smartphone or tablet setup) with web browser (Internet explorer, Google Chrome, Firefox, Opera or Safari)
WAN	OUTPUT POWER & SENSITIVITY GAIN (5GHz)	OUTPUT POWER & SENSITIVITY GAIN (2.4GHz)
<ul style="list-style-type: none"> Supports WISP connection mode Supports RJ-45 cable/xDSL modems WAN protocol: PPPoE, static IP, dynamic IP, PPTP and L2TP 	<p>Output Power</p> <ul style="list-style-type: none"> 11a(54Mbps): 14±1dBm 11n(20MHz, MCS7): 13±1dBm 11n(40MHz, MCS7): 13±1dBm 11ac(80MHz, MCS9): 12±1dBm <p>Receive Sensitivity</p> <ul style="list-style-type: none"> 11a(54Mbps): -68±2dBm 11n(20MHz, MCS7): -68±2dBm 11n(40MHz, MCS7): -68±2dBm 11ac(80MHz, MCS9): -51±2dBm 	<p>Output Power</p> <ul style="list-style-type: none"> 11b (11Mbps): 18±1dBm 11g (54Mbps): 14±1dBm 11n (20MHz, MCS7): 13±1dBm 11n (40MHz, MCS7): 13±1dBm <p>Receive Sensitivity</p> <ul style="list-style-type: none"> 11b(11Mbps): -85±2dBm 11g (54Mbps): -68±2dBm 11n(20MHz, MCS7): -68±2dBm 11n(40MHz, MCS7): -68±2dBm
SECURITY	MEMORY	HUMIDITY & TEMPERATURE
<ul style="list-style-type: none"> 64/128-bit WEP, WPA and WPA2 security QoS for critical operations SPI anti-DoS firewall 	<ul style="list-style-type: none"> 16MB NOR Flash 64MB RAM 	<ul style="list-style-type: none"> 10-90% (non-condensing) 0-40°C
POWER ADAPTER	DIMENSIONS & WEIGHTS	CERTIFICATIONS
<ul style="list-style-type: none"> DC 5V, 1.5A 	<ul style="list-style-type: none"> 160mm x 115mm x 31mm 170g 	<ul style="list-style-type: none"> FCC/CE

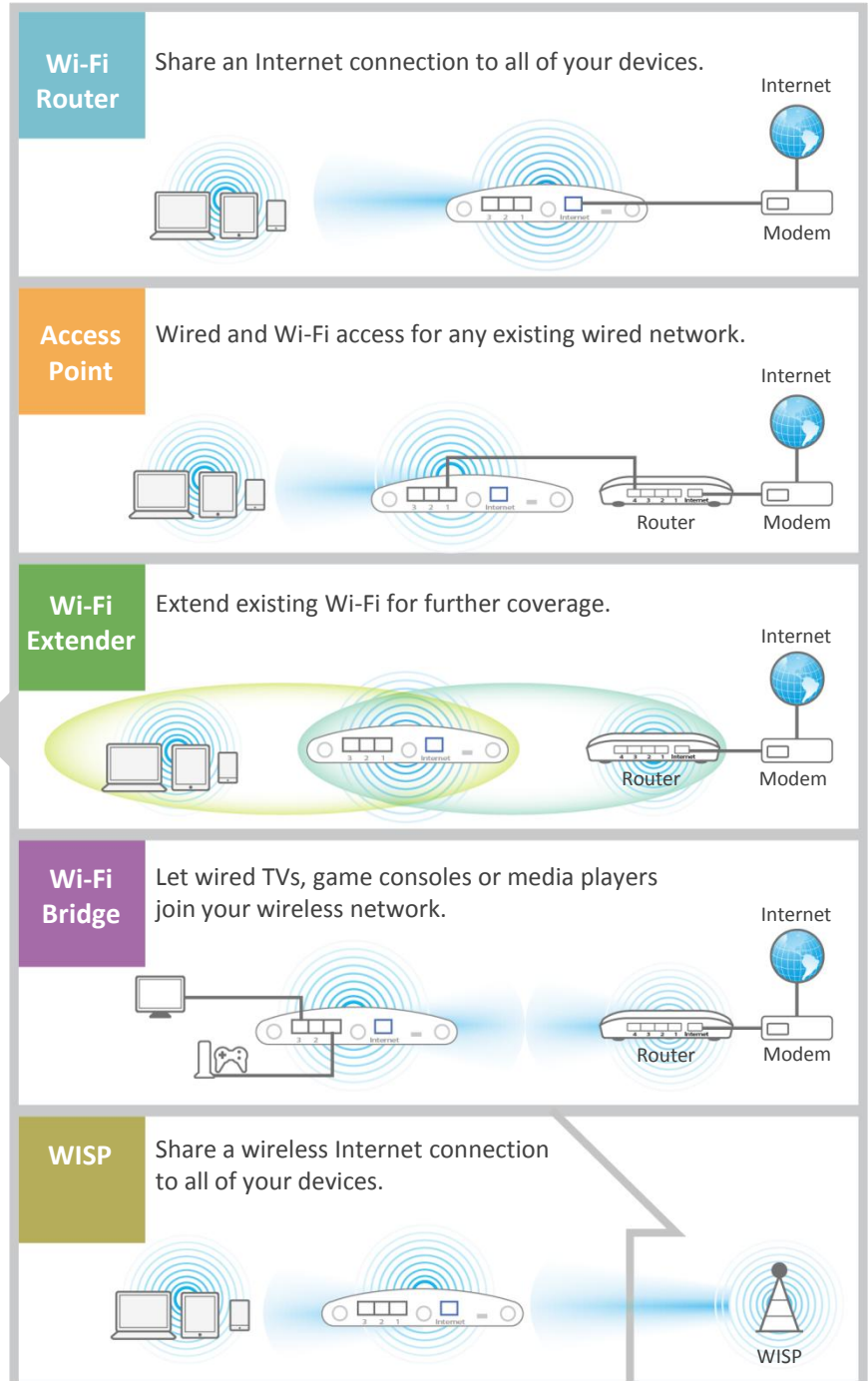
HARDWARE INTERFACE



AC750 Dual-Band Wi-Fi Router with VPN Access Point, Range Extender, Wi-Fi Bridge & WISP

BR-6208AC V2

APPLICATION DIAGRAM



Maximum performance, actual data rates, and coverage will vary depending on network conditions and environmental factors. Product specifications and design are subject to change without notice.
Copyright © 2016 Edimax Technology Co. Ltd. All rights reserved. www.edimax.com